

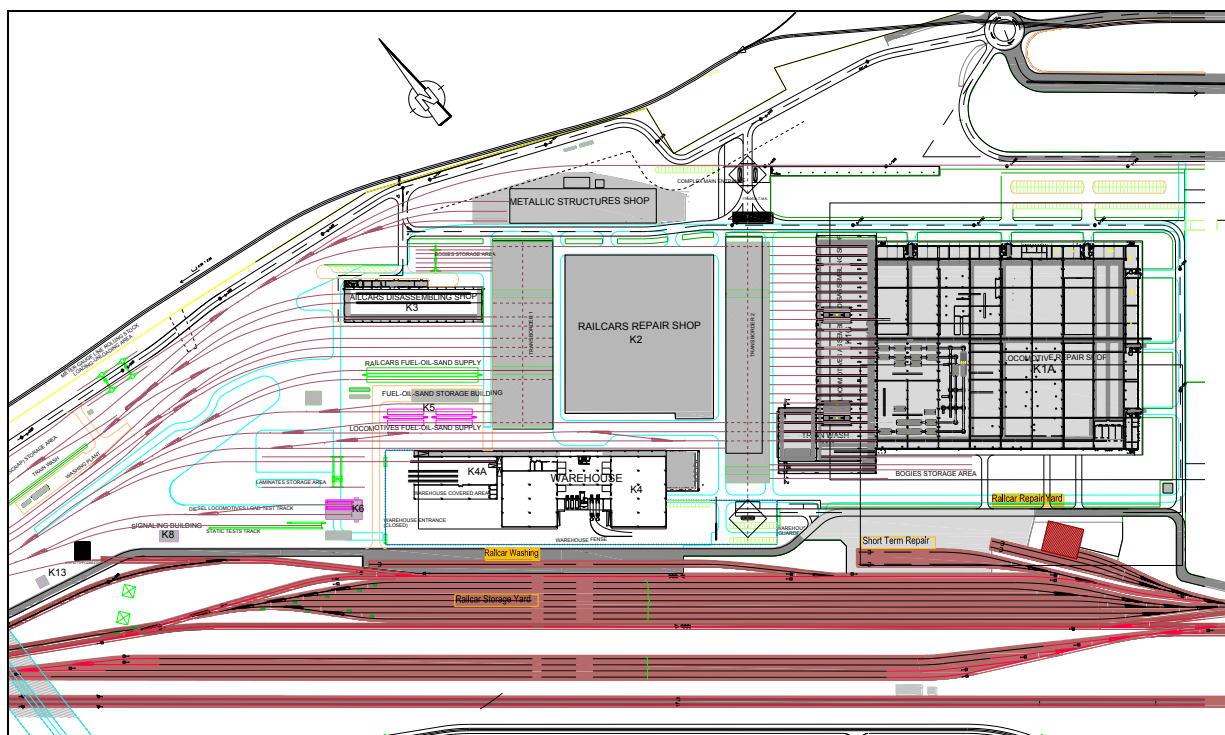


HELLENIC RAILWAY ORGANIZATION S.A.

SERVICE AND MAINTENANCE DEPOT AT THRIASION

PROJECT BUDGET: 40.000.000 €
ARCHITECTURAL DESIGN: H. GOUNAROPOULOS - A. KOSTIKAS, PLEIAS Ltd
STRUCTURAL DESIGN: KANON CONSULTING (2006-2007)

The service and maintenance depot of Hellenic Railway Organization (O.S.E.) is comprised of a number of buildings. These include a building for the servicing and repairs of railcars (K2), a disassembly shop for all type of railcars and locomotives (K3), a central warehouse (K4) a railcar warehouse shelter (K4A), a warehouse for lubricants and sand (K5), a testing facility (K6), a signaling facility (K8), a steel workshop, a railcar washing and cleaning installation and other minor facilities.



Master plan of the maintenance and service installations at Thriasion

The railcar **repair shop (K2)** is an existing building currently used as a warehouse and will be renovated in its interior, so that the new functionality demands are met.

The **disassembly shop (K3)** measures 115.3x34.70m and will be built with a reinforced concrete framework and a steel roof.

The **central warehouse complex (K4)** is comprised of three sections. The two end sections are mainly used as storage areas, where all type of spare parts are stored. These sections are 45.0x57.50m each and their height is 16.0m.

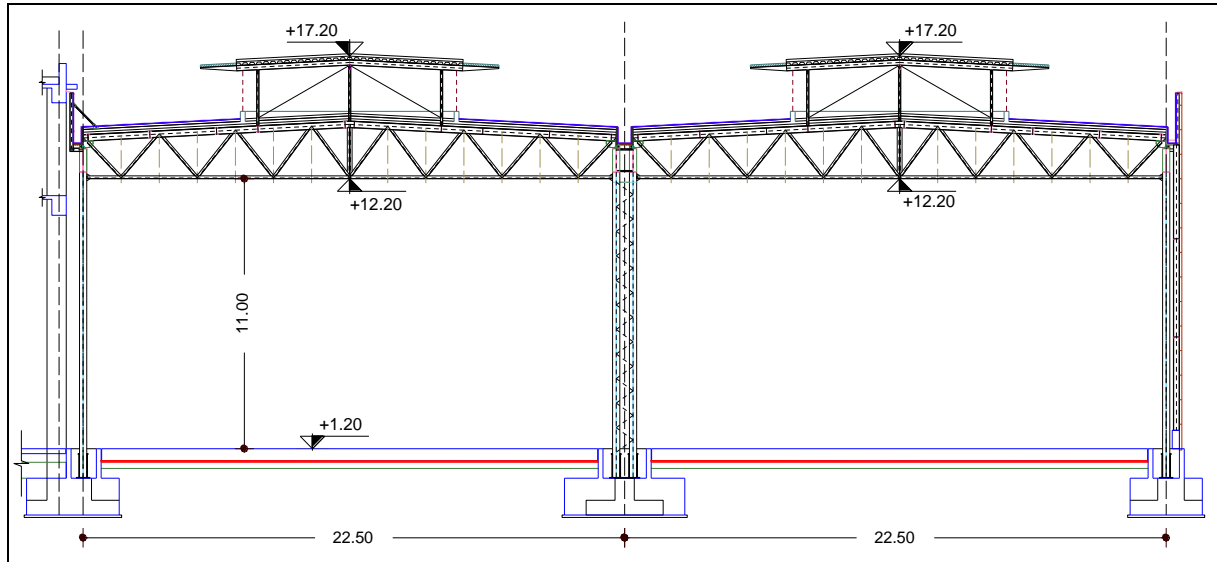
The columns are placed at a 15.50x22.50m grid. The roof is composite reinforced concrete slab supported by steel beams. The roof main supporting elements are trusses at 5.75m spacing, spanning at 22.50m distance.

The central part of the warehouse is 43.50x45.00m, two story reinforced concrete building 14.90m high. It is used as an order and delivery area.

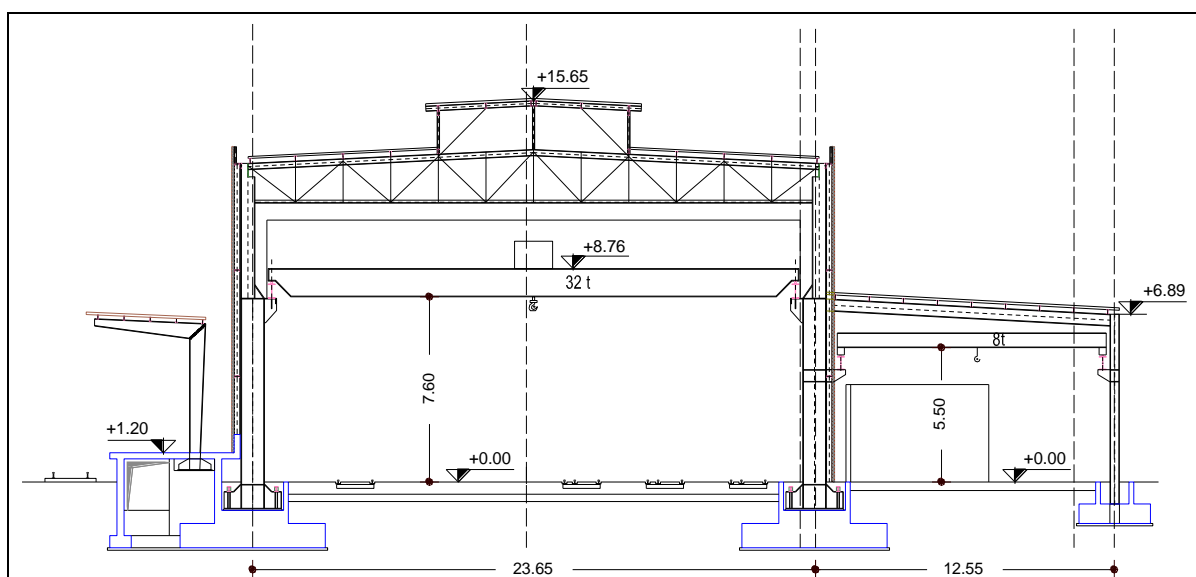
In continuation of the central warehouse there is a long shelter for railcars. Its dimensions are 69.0x37.0m and it's made of steel. Trains can enter this shelter in the main 24.0m wide bay for servicing. The building is equipped with a 32t crane for lifting of large weights.

The locomotive lubricant and sand supply (K5) is a two story reinforced concrete building 33.6x7.8m in dimensions. It houses not only the area for storage of supplies but also laboratories and offices.

Also made of reinforced concrete are the testing facility (K6) 22.4x6.80m in dimensions, and the signaling facility (K8) which is a two story building with a basement.



Central Warehouse Storage Area
Typical section of steel structure



Central Warehouse Shelter - Typical section